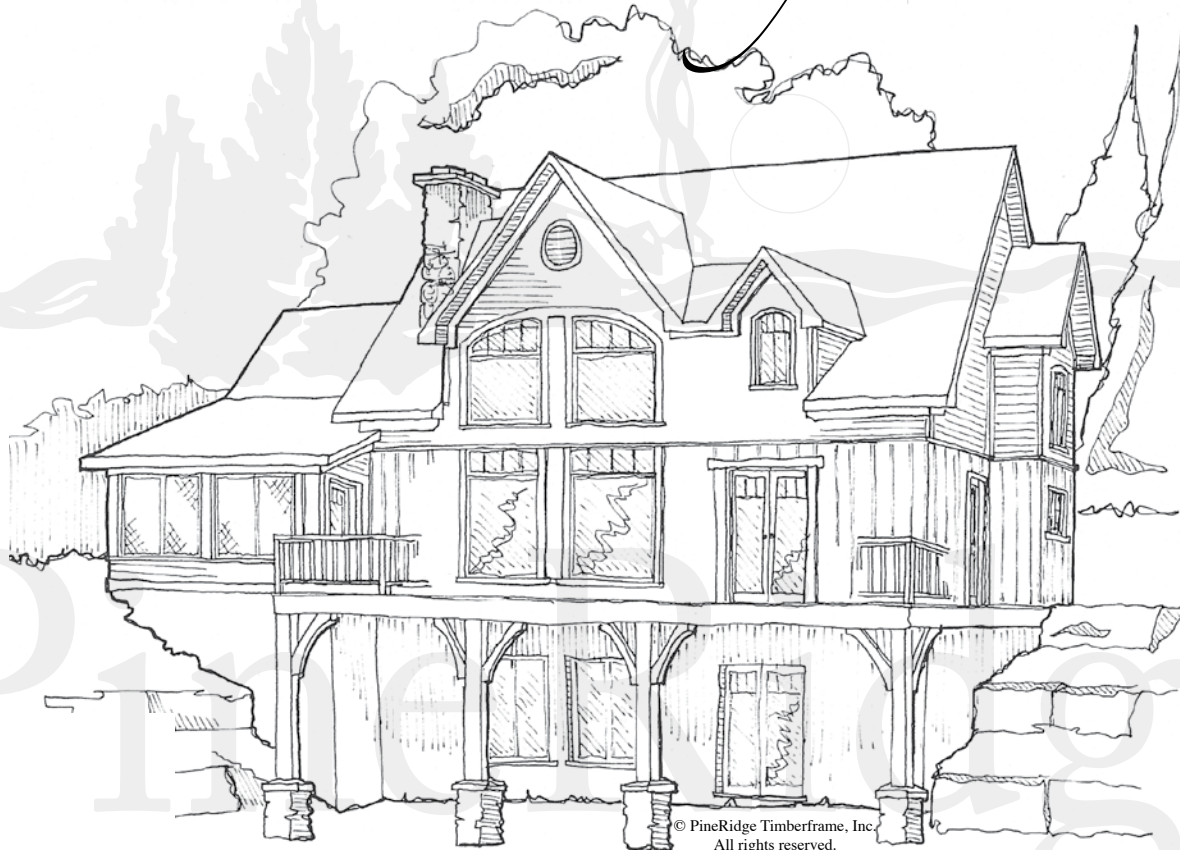


the
North Country



© PineRidge Timberframe, Inc.
All rights reserved.

*W*hether it's a view of the lake, mountains, or river valley, you'll be able to see it from just about every room of this home. An efficient and open kitchen has easy access to the dining area and great room. The loft covers the kitchen and dining area, leaving the ceiling open in the great room. The floor to ceiling windows brings the outdoors inside, making the room seem much larger, but still cozy. A screened or glassed 3-season room adjoins the great room for outdoor dining without the pesky guests.

This floor plan offers flexibility in design -- small enough for a getaway home on a size restricted lot, yet spacious enough for year round living.

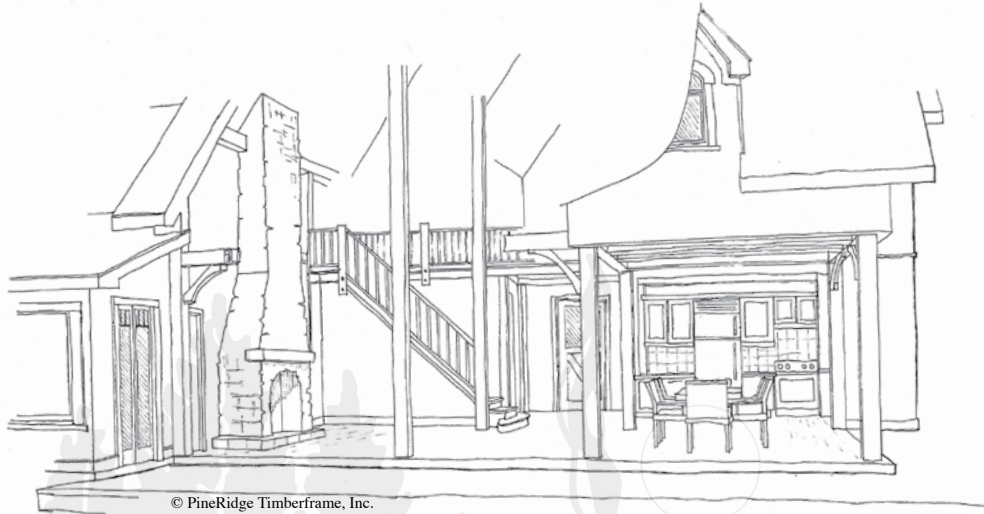


the North Country

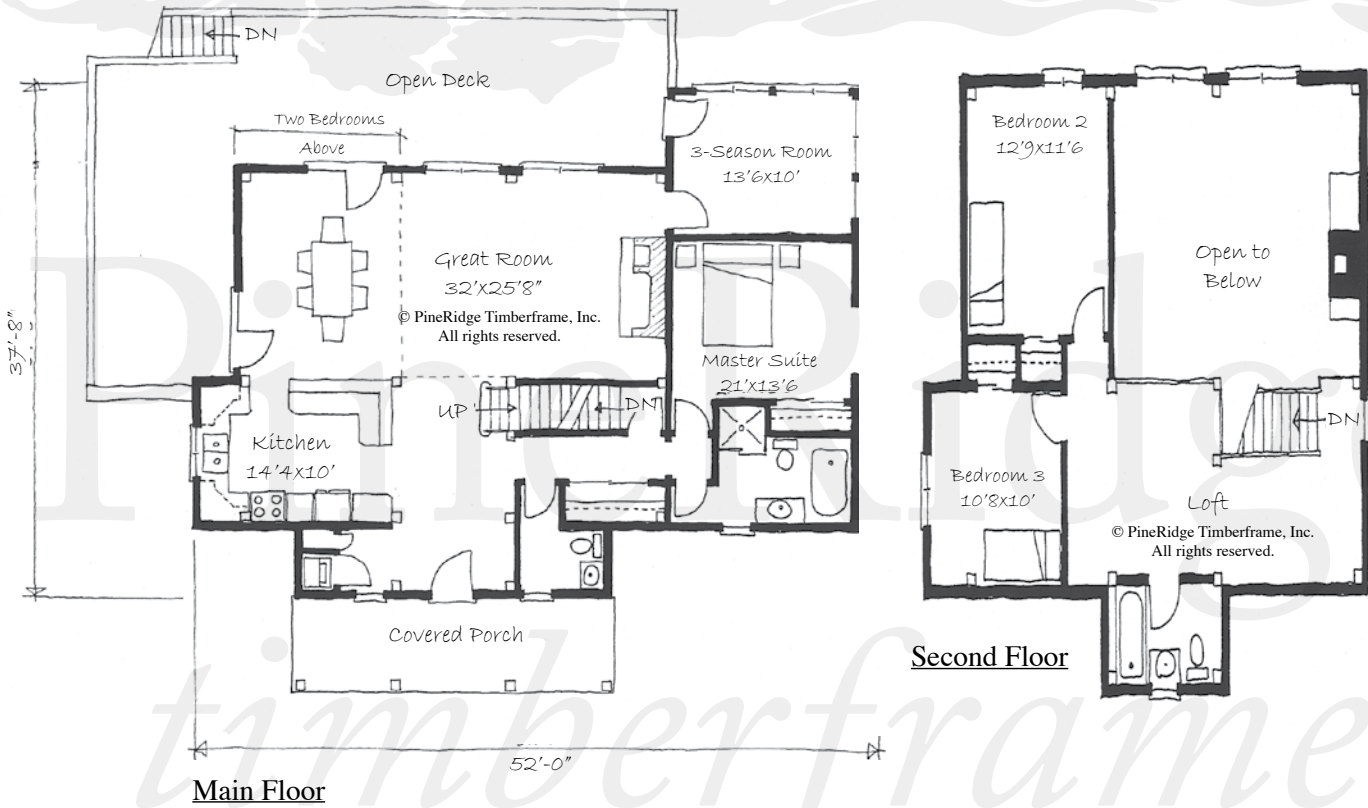
Total Square Footage: 2,100 sq. ft.

Main Floor: 1,500 sq. ft.

Second Floor: 600 sq. ft.



© PineRidge Timberframe, Inc.
All rights reserved.



the North Country

Total Square Footage: 2,100 sq. ft.
Main Floor: 1,500 sq. ft.
Second Floor: 600 sq. ft.