

# the Newbury



© PineRidge Timberframe, Inc.  
All rights reserved.

Square doesn't have to be boring. This plan's footprint is 30' x 30', but with careful planning and maximization of space, the Newbury makes it work and still look good. The main floor mudroom is located just inside the front door, with a laundry closet and full bath that passes through to the master bedroom in the rear of the house. The Newbury is equipped with a spacious open kitchen and dining area.

Upstairs the floor plan is entirely open except for a full bath. The dormers bring in light and add extra space for headroom. There's ample room for bunks, built-in shelving or storage that takes advantage of space under the eaves. A beautiful covered porch and echoing brace detail at the roof peaks take the Newbury floor plan outside the box.

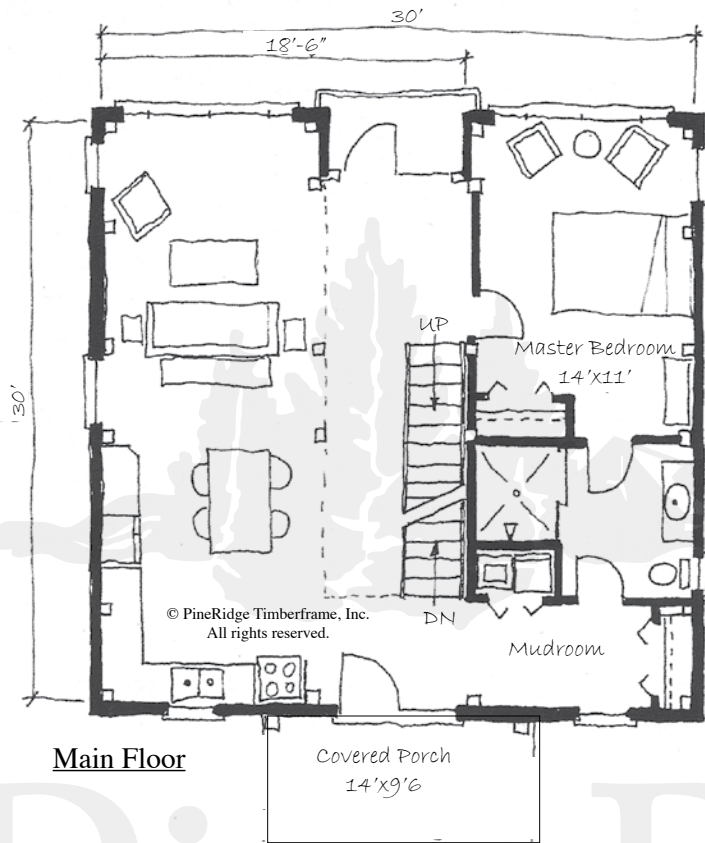


*the Newbury*

Total Square Footage: 1,600 sq. ft.

Main Floor: 900 sq. ft.

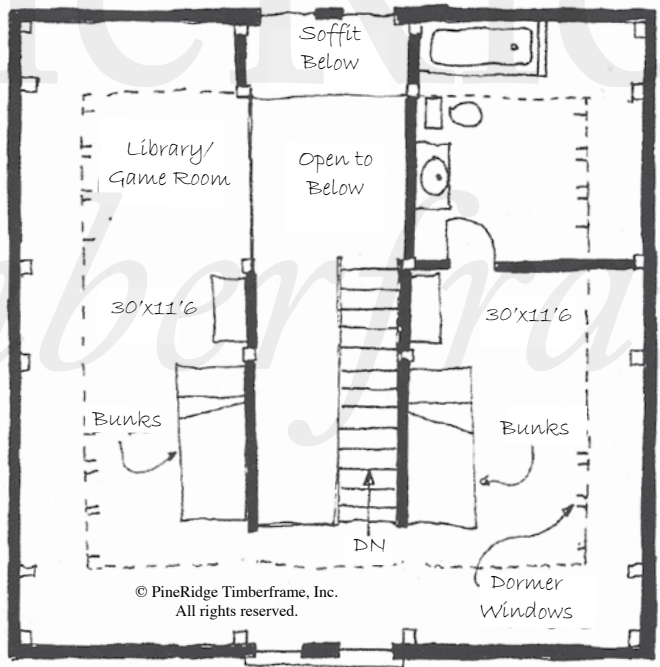
Second Floor: 700 sq. ft.



**Main Floor**

*the Newbury*

**Total Square Footage: 1,600 sq. ft.**  
**Main Floor: 900 sq. ft.**  
**Second Floor: 700 sq. ft.**



**Second Floor**